

Arbortext® IETP Viewer for S1000D

A fully interactive viewing environment for S1000D-compliant technical information

Arbortext Interactive Electronic Technical Publications (IETP) Viewer for S1000D delivers technical data in a fully interactive, browser-based environment to support the S1000D international technical publications specification for the global Aerospace and Defense industry.

By using the latest web-browser technology, Arbortext IETP Viewer for S1000D delivers technical information to the point-of-need via CD ROM, PDA or the Internet, through an easy-to-use intuitive interface. Arbortext IETP Viewer for S1000D is also capable of integrating with maintenance management and training systems, to deliver a truly integrated information delivery solution.

Coupled with Arbortext Common Source Database (CSDB) for S1000D, the Arbortext IETP Viewer for S1000D provides seamless, rapid IETP viewing capabilities. By leveraging the feature-rich capabilities of Arbortext software, such as Arbortext Editor® and Arbortext IsoDraw®, the complete suite of integrated Arbortext products for A&D deliver unparalleled authoring and illustration, management, and publishing capabilities, resulting in cost-savings and proven success.

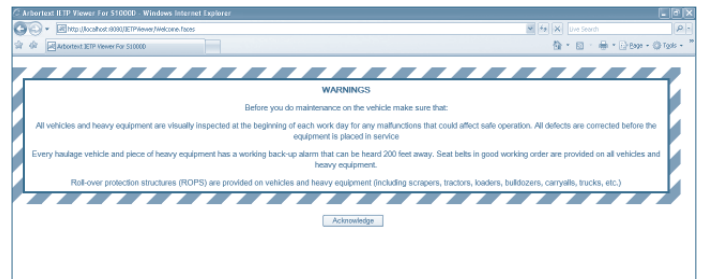
Key Benefits

Facilitate S1000D compliance, realize greater productivity and improve service levels

- Out-of-the-box IETP viewing capability for S1000D-compliant data modules provides instant access to technical product information for service and support functions
- Internet technologies facilitate interaction with other electronic data sources of supply and maintenance information to improve data accuracy and minimize human intervention
- Flexible configurations to accommodate one or several concurrent projects

Rapid adoption with the market-leading solution

- Leverage the industry's leading S1000D solution with the highest number of active S1000D installations and broadest S1000D support for more than 10 years



Interactive safety warnings within the Arbortext IETP Viewer for S1000D require service professionals to acknowledge safety considerations before executing the procedure.

IETP Viewing Deployment Options

Users may interact with one or more of three deployment methods with Arbortext IETP Viewer for S1000D:

Centrally Served IETP – the IETP is published directly on the centrally hosted application server on the project wide area network. Users with appropriate privileges can access the IETP administrative functions for configuration of operational preferences. Users with authorization to access the IETP will have direct access via a standard Internet browser. Updates are published directly to the central server.

Locally Served IETP – the IETP is published to a locally hosted server(s) within specific local area networks within the end-user environments. Users with appropriate privileges can access the IETP administrative functions for configuration of local operational preferences. Users with authorization to access the IETP will have direct access via a standard Internet browser. Updates are published to the locally administrated servers.

Stand-Alone IETP – the IETP is published and distributed on CD-ROM/DVD for use on a stand-alone PC in the end-user environments. Users with authorization to access the IETP will have direct access via a standard Internet browser. Additionally, downloads off the full IETP or selected elements will be available from the centrally served IETP. Downloading to light specification equipment (e.g., handheld devices) enables users to download discrete information on an as-required basis for use in off-line situations.

Product Features and Capabilities

Viewing Capabilities – Complies with S1000D mandates for viewing interactive electronic technical publications and CSDB project configuration information.

- System applicability, numbering system manager, zoning, and information types/sets
- Publication and user display preferences
- Full text searches, searches within data modules and IETP structures
- Universal naming conventions to enable cross-platform operations
- CGM images and hotspots on the Windows® platform only
- Integration to LDAP allows administrators to limit users to specific publications
- Insert comments and annotations directly in to the publication

Navigation and Search – Supports multiple navigation options for standard numbering system (SNS), figures, titles and a built-in search engine enable the user to search for discrete terms such as equipment, information type, data module title, and free text. Filters out unwanted data modules by removing specific chapters, sections and subsections from the SNS.

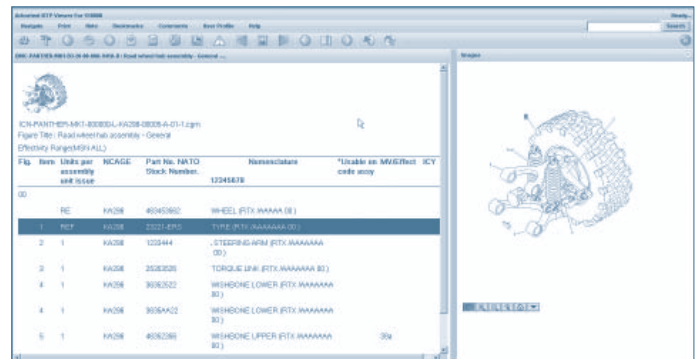
Safety Conditions – Informs users of any relevant safety information applicable to a procedure or specific step. Users must acknowledge a warning or caution before they are allowed to continue with the procedure. This guarantees that service professionals see the safety information before executing the task.

Illustrations – Large and complex illustrations can be viewed through the Arbortext IsoView® plug-in to view CGM files. This enables readers to zoom in and out, pan in all directions, rotate an image through 360° and redline print.

File Formats Supported – BMP, CGM, GIF, ISO, JPG, PNG, SVG and TIFF.

Multimedia Formats Supported – ASF, AVI, MP3, MPG and WAV.

Multi-language Support – English, German, Portuguese, Russian and simplified Chinese



Hotspot links allow on demand two-way highlighting between publication illustrations and related text.

Standards Compliance

Arbortext Product Information Delivery Solutions for A&D have supported global S1000D projects since 1995, and feature the highest number of active installations. Arbortext IETP Viewer for S1000D fully supports each version of the specification, up to and including Issue 3.0.

System Requirements

Visit www.ptc.com/support/arbortext.htm for a list of current system requirements and compatibility.

Learn More

For more information please visit www.ptc.com/go/pid.