

# Arbortext® Provisioning Manager

Streamline initial provisioning and the production of illustrated parts catalogs

Arbortext Provisioning Manager enables users to create, deliver, receive and review initial provisioning data and illustrated parts catalogs in accordance with the Aerospace & Defense (ASD) Specification S2000M standards, to accommodate either independent provisioning projects or S2000M Chapter 1 requirements.

Arbortext Provisioning Manager provides the most cost effective method of compiling initial provisioning data to the S2000M standard. You can tailor your initial provisioning data to suit the business rules of one or multiple projects, and the solution can be configured as a stand-alone operation, or a fully integrated Arbortext solution for S1000D, or a combination of both.

When fully integrated with Arbortext Common Source Database (CSDB) for S1000D, the Arbortext Provisioning Manager can update provisioning data directly into the Arbortext CSDB for S1000D, so you can generate illustrated parts data modules and numerical indexes – stored in CSDB – as reusable SGML and XML files.

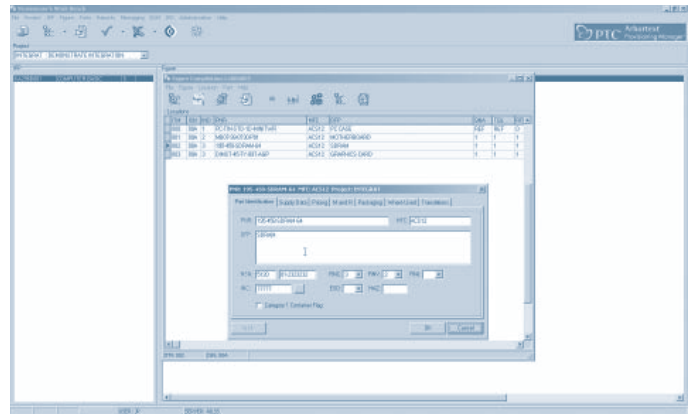
## Key Benefits

### Fulfill initial provisioning requirements rapidly, using an integrated solution

- Accelerate data acquisition, compilation and review cycles through integration with all Arbortext product information delivery products for A&D
- Improve process efficiencies, and minimize manual data entry, by repurposing data from Arbortext product information delivery solutions for A&D and external Logistics Support Analysis applications

### Optimize efficiencies with the market-leading solution

- Arbortext delivers the industry's leading A&D product information delivery solutions, with the highest number of active S1000D and initial provisioning installations



Initial provisioning data can be compiled from LSAR sources, EDI messages, Microsoft Excel spreadsheets, bills of materials and manual data entry.

## Features and Capabilities

### Initial Provisioning and Project Configuration

Arbortext Provisioning Manager provides the most flexible data acquisition, compilation and validation capabilities available.

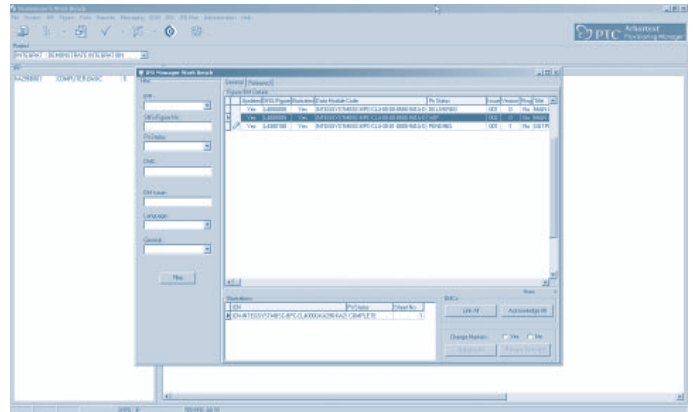
- Data acquisition and compilation – Data for initial provisioning (IP) is acquired and compiled from multiple sources, including Logistic Support Analysis (LSA) data, Microsoft® Excel® spreadsheets, electronic data interchange (EDI) messaging, bills of materials (BOMs), or manual data entry.
- Data handling – Advanced data handling capabilities ensure accurate and timely access to data.
  - Perform online data validation checks against S2000M business rules to identify missing mandatory or conditional data elements
  - Facilitate context-sensitive help within an online link to the S2000M data dictionary
  - Extract Excel data for use in non-S2000M projects
  - Provide data cloning for existing initial provisioning data compilations to be repurposed into new or updated projects
  - Support global part replace to universally update obsolete or superseded provisioning information
  - Enable spares-scaling planning to estimate spares resources
  - Support multiple language descriptions for parts and locations
  - Generate reports for project and administrative status

- Multiple project configuration – Arbortext Provisioning Manager operates either as a stand-alone provisioning application, as an integrated solution with Arbortext CSDB for S1000D, with logistic support analysis record (LSAR) applications, or any combination of these sources
  - The advanced, multi-project, process-driven interface links multiple projects, and shares common information between different projects
  - The LSA record-driven compilation capability creates IP data based on the document code within the LSAR data source, creates catalog sequence numbers automatically and allows users select the logistic support analysis code number (LCN) and add key IP data prior to the data transfer
  - For non-LSA compilations, the CSDB can query the Standard Number System (SNS) to generate the initial provisioning figure number and directly link the SNS to the data module code (DMC) in Arbortext Provisioning Manager
- Electronic Data Interchange (EDI) Messaging – In compliance with the S2000M standard, the Arbortext Provisioning Manager generates the following EDI message types:
  - CSNIPD – Catalog Sequence Number Oriented Initial Provisioning Data
  - UPIPCO – Category One Update
  - UPIPCT – Category Two Update
  - PNOIPD – Part Number Oriented Initial Provisioning Data
  - UPIPPN – Update to Part Number Oriented Initial Provisioning Data
  - OBSINF – Observation Message
  - CORIPD – Correction to Initial Provisioning Data
  - CODREQ – Codification Request
  - ERRNLT – Error Note
  - CONTRL – Control Note

## NATO Codification

Arbortext Provisioning Manager conducts codification activities in accordance with the NATO Codification Bureau (NCB), including naming, classifying, descriptions of initial provisioning items, and assigning of the unique NATO Stock Number (NSN). The codification process allows inbound and outbound data transmissions to fulfill the codification process as follows:

- Enables the codification user to create the NATO Codification Project Codes (NCPC), as defined and implemented by country-specific members of the NATO Codification Bureau (NCB)
- The NCPC code may be set as a default value in the project defaults



Completed initial provisioning data modules are released to Arbortext CSDB for 1000D.

- Outbound codification data for the NCB is loaded to the Arbortext Provisioning Manager codification area by selecting the initial provisioning project number (IPPN)
- Codification messages returned from the NCB are loaded directly in to the Arbortext Provisioning Manager codification area
- Returned messages include updated status information codes, initial output formats (IAK), and item of supply information system (ISIS) codes
- Codification data that's returned is reviewed in the codification area, including characteristic data, potential matches, and any codification history of items
- Following the review and acceptance of codification data, the main compilation area is updated with data, such as the NSN, which includes the reference number category code, variation and justification codes, item name code, and descriptions for parts

## Illustrated Parts Data Generation

When integrated with Arbortext CSDB for S1000D, the Arbortext Provisioning Manager is able to produce illustrated parts data (IPD) modules by leveraging technical product data within the Arbortext Provisioning Manager. Cross-referencing the Standard Numbering System (SNS) allows the creation of data module codes when creating catalog sequence figure numbers for initial provisioning data.

Data transferred to the Arbortext CSDB for S1000D reflects the data issued either via the initial provisioning messaging process or directly from the main compilation area. Initial provisioning data updates are managed in the same way, and changes are reflected in the illustrated parts data modules once it's re-released from the Arbortext Provisioning Manager.

Electronic 2D and 3D illustration entities are loaded to the CSDB and linked to the illustrated parts data module to be viewed from within Arbortext Provisioning Manager, to review illustrations as part of the initial provisioning data review process.

The illustrated parts data (IPD) manager utility extracts information from the compilation area to pass to the CSDB. The IPD manager uses the provisioning data to acknowledge and update the new CSDB entities with the illustrated parts module and the numerical indexes.

#### Reviewing Initial Provisioning Data

Arbortext Provisioning Reviewer is an optional, Web-based application for enterprise-wide reviewing, commenting, and capturing of initial provisioning and parts catalog data for S2000M compliance. The application ensures secure-controlled access to the initial provisioning database for customers, partners and other departments to review in-process data online.

Also, with the addition of Arbortext IsoView®, Arbortext Provisioning Manager supports online viewing of initial provisioning data illustrations allocated within CSDB entities.

#### Standards Compliance

Arbortext product information delivery software for A&D has supported global S1000D and S2000M projects since 1995 and features the highest number of active installations.

Arbortext Provisioning Manager fully supports each version of S2000M Chapter 1, up to and including Issue 3.

## Arbortext product information delivery software for A&D provides integrated compliance solutions for S1000D, S2000M chapter 1, and SCORM

By extending the value of Arbortext Provisioning Manager with the complete Arbortext product family along with the PTC Product Development System, you can gain even greater efficiencies – and enable further compliance – across your enterprise. Additional Arbortext product information delivery software for A&D include:

**Arbortext LSA Interface** is an application interface that allows Arbortext Provisioning Manager to acquire initial provisioning figure data and parts information from a logistics support analysis record application. For Arbortext CSDB for S1000D, the Arbortext LSA Interface links LSAR maintenance tasks to data module codes within the CSDB.

**Arbortext CSDB for S1000D** is a complete technical content management solution meeting the specific requirements for the Aerospace & Defense sectors, fully supporting the S1000D international specification for technical publications.

**Arbortext Learning Content Manager for S1000D** extends the Arbortext CSDB for S1000D into a full-featured, SCORM-compliant learning content management system (LCMS).

### System Requirements

Visit [www.ptc.com/support/arbortext.htm](http://www.ptc.com/support/arbortext.htm) for a list of current system requirements and compatibility

### Learn More

For more information about the Arbortext product information delivery software for A&D visit [www.ptc.com/go/pid](http://www.ptc.com/go/pid). To learn more about PTC Product Development System for Aerospace & Defense, please visit [www.ptc.com/solutions/industry/index.htm](http://www.ptc.com/solutions/industry/index.htm)