

Creo™ Schematics

DESIGN COMPLEX SYSTEMS WITH CONFIDENCE

To succeed in today's markets, companies need to introduce products faster than the competition, at lower cost and with higher quality. Creo Schematics helps you achieve this goal by automating the cabling and piping systems detailed design processes—saving time, effort and money.

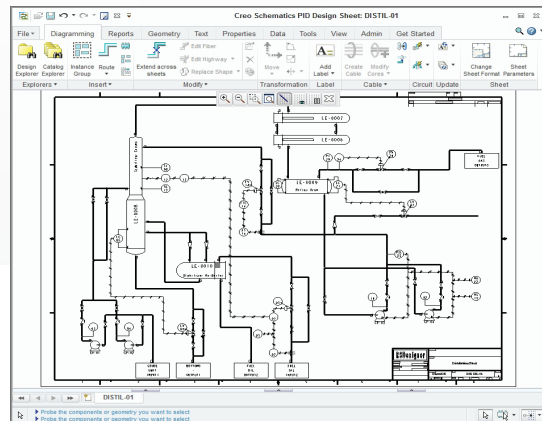
When designing products that contain cabling or piping, it is absolutely essential to create high-quality diagrams that document and plan the schematic requirements. Creo Schematics contains the rich breadth of diagramming tools to satisfy the needs of many disciplines and industries, without forcing designers to compromise.

As part of the design process, mechanical designers route cables and pipes within their 3D assembly using schematic designs as maps. Creo Schematics automates this step, extracting the schematic information and electronically driving the routed systems within any 3D MCAD system that accepts XML data. Creo Schematics is specifically optimized to utilize all the rich capabilities in cable and pipe routing within Creo. This compatibility not only speeds the 3D design by removing the tedious, manual process of interpreting 2D schematic diagrams, but it also virtually eliminates errors by ensuring adherence to the logic defined in the schematics.

Key Benefits

Reduce time-to-market

Creo Schematics provides the rich, multi-discipline tools design engineers need to create schematic designs quickly and easily. Creo Schematics then automates the routing of 3D cables and wires within Creo Parametric and Creo Elements/Direct™, and the routing of pipes within Creo Parametric. This eliminates the process of manually interpreting 2D schematics when creating a 3D digital prototype of harnesses and pipes.



Creo Schematics is a comprehensive 2D diagramming solution for multiple design disciplines.

Features and Specifications

Diagram types

- P&ID
- Block
- Wiring
- HVAC
- Functional
- Schematic
- Hydraulic
- Pneumatic

Data exchange

- Supported export formats: CSV, CGM, DWG, DXF, Medusa, PDF, XML, ECAD and CON
- Supported import formats: CSV, CGM, DWG, DXF, Medusa and XML
- Support for legacy Pro/DIAGRAM™ data

Design manipulation

- Windows® Explorer-style interface
- Context-sensitive, right mouse button pop-ups
- Define any user property
- Fast navigation through multiple sheets
- Update catalogs
- Merge design sheets

Data management

- Managed by Pro/INTRALINK®, Windchill® PDMLink®, and Windchill ProjectLink™

Flexible catalog management

- Central catalog provides a single source for company design libraries
- Free symbol library includes ANSI, CSA and IEEE standards

Properties and parameters

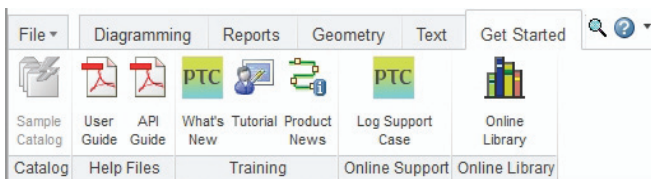
- Parameters are fully user-definable and may be attached to: Folders, Sheet Sets, Sheets, Blocks, Fibers, Groups, Ports, Formats
- Parameters values may be defaulted in the catalog, modified upon instancing, updated by selection from a data set, edited from a multi-selection, or allocated automatically
- Graphical display of properties available on: Sheets, Formats, Blocks, Fibers, Groups, Ports
- Automated assignment of connector terminator information
- Import signal information from PCB applications

Display characteristics

- Any number of attributes
- Any sub-string of any attribute value
- Any fixed strings, delimiters
- True Type font support
- Any layer, color
- Customizable labels

Fast, configurable reporting

- Report types: Parameters, Inventory, Connection
- Reporting classes: Design, Catalogue, Block, Group, Fiber, Port
- Criteria:
 - Integer and real parameters
 - String parameters
 - List parameters
 - Sheet parameters
 - Type parameters
- Report destination: Sheet, Dialog Box, File
- Java Read API



Creo Schematics helps you get up to speed quickly with easy access to tutorials, and online symbol catalogs, and quick links to PTC.com and support resources.

Electrical simulation

- RSDSimulate Lite for analyzing various current and voltage properties between components – (not available with Creo Schematics Lite*)

*Free download at PTC.com/support

Tutorials

- Free tutorials are included to help new users get up to speed quickly with Creo Schematics.
- Free electrical simulation tutorials for new users of RSDSimulate Lite

Language support

- English, German, French, Japanese and Simplified Chinese

Platform requirements

- Microsoft® Windows 7 and XP (32- and 64-bit)
- Please see PTC.com for specific operating system requirements

For the most up-to-date platform support information, visit: PTC.com/partners/hardware/current/support.htm

For more information, visit: PTC.com/products/creo/simulate

© 2011, Parametric Technology Corporation (PTC). All rights reserved. Information described herein is furnished for informational use only, is subject to change without notice, and should not be construed as a guarantee, commitment, condition or offer by PTC. PTC, the PTC logo, Creo, Elements/Direct, Pro/DIAGRAM, Pro/INTRALINK, Windchill, Windchill PDMLink, Windchill ProjectLink, and all PTC product names and logos are trademarks or registered trademarks of PTC and/or its subsidiaries in the United States and in other countries. All other product or company names are property of their respective owners. The timing of any product release, including any features or functionality, is subject to change at PTC's discretion.

6667-Creo Schematics-EN-DS-0611