

Advanced Windchill FMEA 10.2

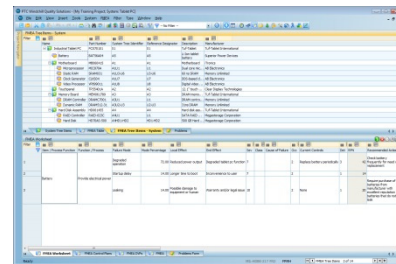
Overview

Course Code TRN-4311-T

Course Length 2 Days

In this course, you will learn how to use PTC Windchill FMEA 10.2 effectively for both out-of-the-box and configured use. You will gain a solid background with hands-on practice applying PTC Windchill FMEA 10.2 to real-world examples.

PTC® Windchill® Quality Solutions™



Prerequisites

- Basic skills and understanding of the use of software programs in a Windows® environment.

Audience

This course is intended for any user of PTC Windchill FMEA 10.2 who wants to learn how to use PTC Windchill FMEA 10.2 efficiently for out-of-the-box and configured use.

Topics

- Introduction to PTC Windchill Quality Solutions 10.2, Desktop interface
 - Introduction to fundamental features of PTC Windchill FMEA 10.2, including those for data entry, data analysis, and data output, plus additional features
 - Advanced topics of PTC Windchill FMEA 10.2, which allow for configuration
 - Introduction to “common features” topics of PTC Windchill Quality Solutions 10.2 as they apply to PTC Windchill FMEA 10.2; this includes coverage of table configuration, importing, use of Assembly Library files, filtering, graphing, reporting, exporting and use of special Projects, all in more detail than in the Introduction to PTC Windchill FMEA 10.2 topic
-

Agenda

Day 1

Module 1	Welcome and Overview
Module 2	Introduction to PTC Windchill Quality Solutions 10.2
Module 3	Introduction to PTC Windchill FMEA 10.2

Day 2

Module 4	PTC Windchill FMEA 10.2 Advanced Topics
Module 5	PTC Windchill Quality Solutions 10.2 Common Features
Module 6	Conclusion
