

## Advanced Windchill FTA 10.2

### Overview

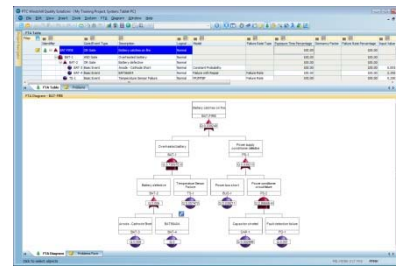
---

Course Code TRN-4312-T

Course Length 2 Days

In this course, you will learn the core concepts and underlying principles of fault tree analysis so you can leverage this knowledge to perform your risk and reliability analyses armed with new expertise. Combining a solid theoretical framework with hands-on instruction in software features and functionality, you will work on sample projects based on real-life scenarios to help you best understand and apply the PTC Windchill FTA 10.2 software.

### PTC® Windchill® Quality Solutions™



### Prerequisites

---

- Basic skills and understanding of the use of software programs in a Windows® environment.

### Audience

---

This course is intended for any user of PTC Windchill FTA 10.2 who wants to learn the underlying theory and application of fault tree analysis and learn how to use PTC Windchill FTA 10.2 efficiently for such analyses.

### Topics

---

- Provide detailed information about fault tree analysis, including basic information, qualitative fault tree analysis, and quantitative fault tree analysis
  - Gain introductory information about PTC Windchill Quality Solutions 10.2
  - Learn the fundamental features of PTC Windchill FTA 10.2, including those for data entry, data analysis, and data output, plus additional features
  - Practice using PTC Windchill FTA 10.2 fundamentals
  - Introduce advanced topics of PTC Windchill FTA 10.2
-

## Agenda

### Day 1

Module 1	Welcome and Overview
Module 2	Fault Tree Basics
Module 3	Qualitative Fault Tree Analysis
Module 4	Quantitative Fault Tree Analysis
Module 5	Additional Fault Tree Analysis Topics
Module 6	Introduction to PTC Windchill Quality Solutions 10.2

### Day 2

Module 7	PTC Windchill FTA 10.2 Introduction
Module 8	PTC Windchill FTA 10.2 Data Entry Fundamentals
Module 9	PTC Windchill FTA 10.2 Data Analysis Fundamentals
Module 10	PTC Windchill FTA 10.2 Data Output Fundamentals
Module 11	PTC Windchill FTA 10.2 Practical Exercise
Module 12	PTC Windchill FTA 10.2 Additional Features
Module 13	PTC Windchill FTA 10.2 Advanced Topics
Module 14	Conclusion