

Introduction to Windchill FMEA 10.2

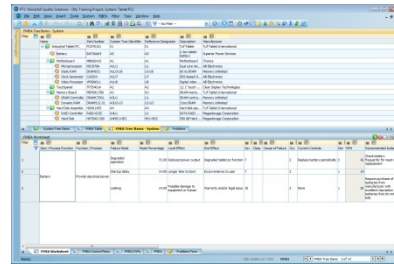
Overview

Course Code TRN-4292-T

Course Length ½ Day

In this course, you will learn about the fundamental features of PTC Windchill FMEA 10.2 for failure mode and effects analysis. You will learn about data entry, data analysis, and data output. You will also learn how to apply PTC Windchill FMEA 10.2 to complete your failure mode and effects analyses effectively and efficiently.

PTC® Windchill® Quality Solutions™



Prerequisites

- Basic skills and understanding of the use of software programs in a Windows® environment.

Audience

This course is intended for any PTC Windchill FMEA 10.2 user to help understand the fundamental functions for using PTC Windchill FMEA 10.2 effectively and efficiently.

Topics

- Provide introductory information about PTC Windchill Quality Solutions 10.2
 - Introduce key features of PTC Windchill FMEA 10.2, including those for data entry, data analysis, and data output, plus additional features
 - Practice using PTC Windchill FMEA 10.2
-

Agenda

Day 1

Module 1	Welcome and Overview
Module 2	Introduction to PTC Windchill Quality Solutions 10.2
Module 3	Introduction to PTC Windchill Quality Solutions 10.2 Practical Exercise
Module 4	PTC Windchill FMEA 10.2 Introduction
Module 5	PTC Windchill FMEA 10.2 Data Entry
Module 6	PTC Windchill FMEA 10.2 Data Analysis
Module 7	PTC Windchill FMEA 10.2 Data Output
Module 8	PTC Windchill FMEA 10.2 Practical Exercise
Module 9	PTC Windchill FMEA 10.2 Additional Features
Module 10	Conclusion
