

## Introduction to Windchill FTA 10.2

### Overview

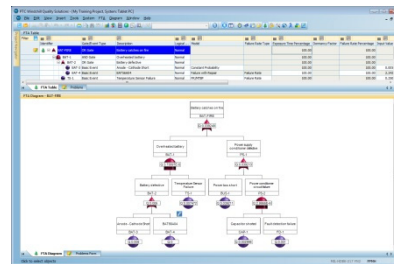
---

Course Code TRN-4294-T

Course Length ½ Day

In this course, you will learn about the fundamental features of PTC Windchill FTA 10.2 for fault tree analysis, with the focus on data entry, data analysis, and data output. You will also learn how to apply PTC Windchill FTA 10.2 to complete your fault tree analyses, effectively and efficiently.

## PTC® Windchill® Quality Solutions™



### Prerequisites

---

- Basic skills and understanding of the use of software programs in a Windows® environment.

### Audience

---

This course is intended for any PTC Windchill FTA 10.2 user to help understand the fundamental functions for using PTC Windchill FTA 10.2 effectively and efficiently.

### Topics

---

- Provide introductory information about PTC Windchill Quality Solutions 10.2
  - Introduce key features of PTC Windchill FTA 10.2, including those for data entry, data analysis, and data output, plus additional features
  - Practice using PTC Windchill FTA 10.2
-

## Agenda

### Day 1

---

Module 1	Welcome and Overview
Module 2	Introduction to PTC Windchill Quality Solutions 10.2
Module 3	Introduction to PTC Windchill Quality Solutions 10.2 Practical Exercise
Module 4	PTC Windchill FTA 10.2 Introduction
Module 5	PTC Windchill FTA 10.2 Data Entry
Module 6	PTC Windchill FTA 10.2 Data Analysis
Module 7	PTC Windchill FTA 10.2 Data Output
Module 8	PTC Windchill FTA 10.2 Practical Exercise
Module 9	PTC Windchill FTA 10.2 Additional Features
Module 10	Conclusion

---