

Introduction to Windchill Maintainability 10.2

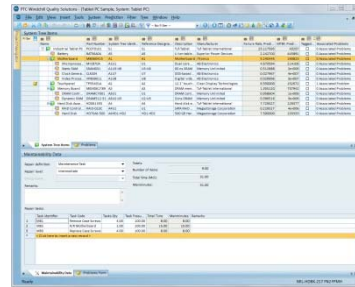
Overview

Course Code TRN-4297-T

Course Length ½ Day

This course provides coverage of the fundamental features of PTC Windchill Maintainability 10.2 for maintainability prediction analysis. After the welcome and overview, it includes thorough coverage of the fundamental features of PTC Windchill Maintainability 10.2, with the focus on data entry, data analysis, and data output. In this course, you will learn how to apply PTC Windchill Maintainability 10.2 to complete your maintainability prediction analyses effectively and efficiently.

PTC® Windchill® Quality Solutions™



Prerequisites

- Basic skills and understanding of the use of software programs in a Windows® environment.

Audience

This course is intended for any PTC Windchill Maintainability 10.2 user to help understand the fundamental functions for using PTC Windchill Maintainability 10.2 effectively and efficiently.

Topics

- Provide introductory information about PTC Windchill Quality Solutions 10.2
 - Introduce key features of PTC Windchill Maintainability 10.2, including those for data entry, data analysis, and data output, plus additional features
 - Practice using PTC Windchill Maintainability 10.2
-

Agenda

Day 1

Module 1	Welcome and Overview
Module 2	Introduction to PTC Windchill Quality Solutions 10.2
Module 3	Introduction to PTC Windchill Quality Solutions 10.2 Practical Exercise
Module 4	PTC Windchill Maintainability 10.2 Introduction
Module 5	PTC Windchill Maintainability 10.2 Data Entry
Module 6	PTC Windchill Maintainability 10.2 Data Analysis
Module 7	PTC Windchill Maintainability 10.2 Data Output
Module 8	PTC Windchill Maintainability 10.2 Practical Exercise
Module 9	PTC Windchill Maintainability 10.2 Additional Features
Module 10	Conclusion
