

Introduction to Windchill Prediction, FMEA, RBD and FTA 10.2

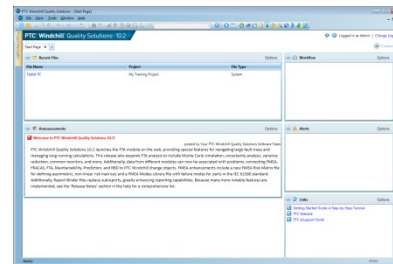
Overview

Course Code TRN-4290-T

Course Length 3 Days

In this course, you will be introduced to Windchill Quality Solutions 10.2 and four of its key modules, enabling you to quickly maximize your investment. You will have an overview of software features and functionality. You will work on sample projects that are based on real-world scenarios. You will learn about some of the key features such as data entry, data analysis and data output for Windchill Prediction 10.2, Windchill FMEA 10.2, Windchill RBD 10.2, and Windchill FTA 10.2. You will also learn about various features common to the various Windchill Quality Solutions 10.2 modules, including importing, graphing, and reporting.

PTC® Windchill® Quality Solutions™



Prerequisites

- Basic skills and understanding of the use of software programs in a Windows® environment.

Audience

This course is intended for any Windchill Quality Solutions 10.2 user to help maximize the Windchill Quality Solutions 10.2 investment, specifically Windchill Prediction 10.2, Windchill FMEA 10.2, Windchill RBD 10.2 and Windchill FTA 10.2.

Topics

- Provide introductory information about Windchill Quality Solutions 10.2
- Introduce key features of Windchill Prediction 10.2, including those for data entry, data analysis, and data output, plus additional features
- Practice using Windchill Prediction 10.2
- Introduce key features of Windchill Quality Solutions 10.2 that are common to multiple modules
- Practice using Windchill Quality Solutions 10.2 Common Features
- Introduce key features of Windchill FMEA 10.2, including those for data entry, data analysis, and data output, plus additional features
- Practice using Windchill FMEA 10.2
- Introduce key features of Windchill RBD 10.2 for block diagram analysis, including those for data entry, data analysis, and data output, plus additional features
- Practice using Windchill RBD 10.2
- Introduce key features of Windchill FTA 10.2, including those for data entry, data analysis, and data output, plus additional features
- Practice using Windchill FTA 10.2

Agenda

Day 1

Module 1	Welcome and Introduction to Windchill Quality Solutions 10.2
Module 2	Introduction to Windchill Prediction 10.2

Day 2

Module 3	Introduction to Common Features of Windchill Quality Solutions 10.2
Module 4	Introduction to Windchill FMEA 10.2

Day 3

Module 5	Introduction to Windchill RBD 10.2
Module 6	Introduction to Windchill FTA 10.2
Module 7	Conclusion
