

Introduction to Windchill Weibull 10.2

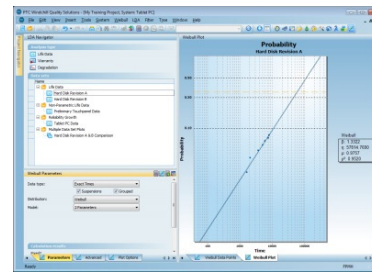
Overview

Course Code TRN-4296-T

Course Length ½ Day

This Introduction to Windchill Weibull 10.2 course is designed to get you up and running with PTC Windchill Weibull 10.2, enabling you to quickly maximize your investment. It begins with an overview of the PTC Windchill Quality Solutions 10.2 interface and then provides thorough coverage of the fundamental features of PTC Windchill Weibull 10.2, with the focus on data entry, data analysis, and data output.

PTC® Windchill® Quality Solutions™



Prerequisites

- Basic skills and understanding of the use of software programs in a Windows® environment.

Audience

This course is intended for any PTC Windchill Weibull 10.2 user to help understand the fundamental functions for using PTC Windchill Weibull 10.2 effectively and efficiently.

Topics

- Provide introductory information about PTC Windchill Quality Solutions 10.2
 - Introduce key features of PTC Windchill Weibull 10.2, including those for data entry, data analysis, and data output, plus additional features
 - Practice using PTC Windchill Weibull 10.2
-

Agenda

Day 1

Module 1	Welcome and Overview
Module 2	Introduction to PTC Windchill Quality Solutions 10.2
Module 3	Introduction to PTC Windchill Quality Solutions 10.2 Practical Exercise
Module 4	PTC Windchill Weibull 10.2 Introduction
Module 5	PTC Windchill Weibull 10.2 Data Entry
Module 6	PTC Windchill Weibull 10.2 Data Analysis
Module 7	PTC Windchill Weibull 10.2 Data Output
Module 8	PTC Windchill Weibull 10.2 Practical Exercise
Module 9	PTC Windchill Weibull 10.2 Additional Features
Module 10	Conclusion
